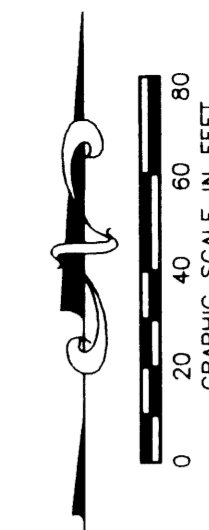


# MIRASOL PARCEL FOURTEEN

PART OF GOLF DIGEST P.C.D.  
BEING IN SECTIONS 03 AND 04, TOWNSHIP 42 SOUTH, RANGE 42 EAST,  
CITY OF PALM BEACH GARDENS,  
PALM BEACH COUNTY, FLORIDA  
SHEET 4 OF 6

- LEGEND**
- Δ CENTRAL (DELTA) ANGLE
  - CH CHORD
  - CPE CART PATH EASEMENT
  - DE DRAINAGE EASEMENT
  - IEE INGRESS-EGRESS EASEMENT
  - L ARC LENGTH
  - LME LAKE MAINTENANCE EASEMENT
  - NPBC1D NORTHERN PALM BEACH COUNTY IMPROVEMENT DISTRICT OFFICIAL RECORD BOOK
  - ORB PLANNED COMMUNITY DEVELOPMENT RADIUS
  - PAE PEDESTRIAN ACCESS EASEMENT
  - PB PLAT BOOK
  - PG PAGE
  - PCD PLANNED COMMUNITY DEVELOPMENT RADIUS
  - R RADIUS
  - UE UTILITY EASEMENT
  - WLE WATER LINE EASEMENT
  - WME WATER MANAGEMENT EASEMENT
  - PERMANENT REFERENCE MONUMENT FOUND LB 048 (4"x4" CONCRETE)
  - PERMANENT REFERENCE MONUMENT SET LB 048 (4"x4" CONCRETE)
  - PERMANENT CONTROL POINT
  - SET LB 048
  - ⊖ CENTERLINE
  - ▼ ZERO LOT LINE INDICATOR

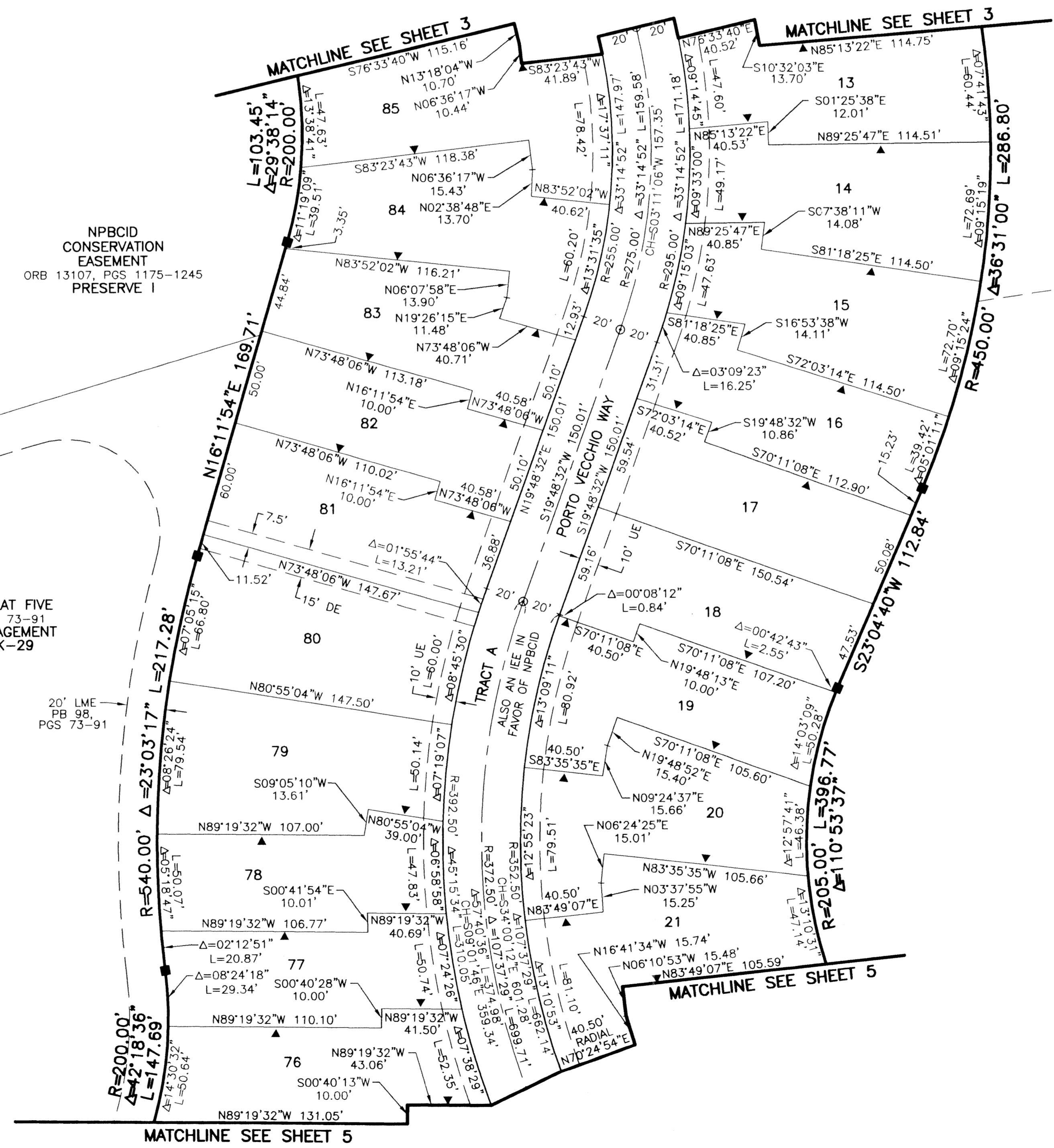
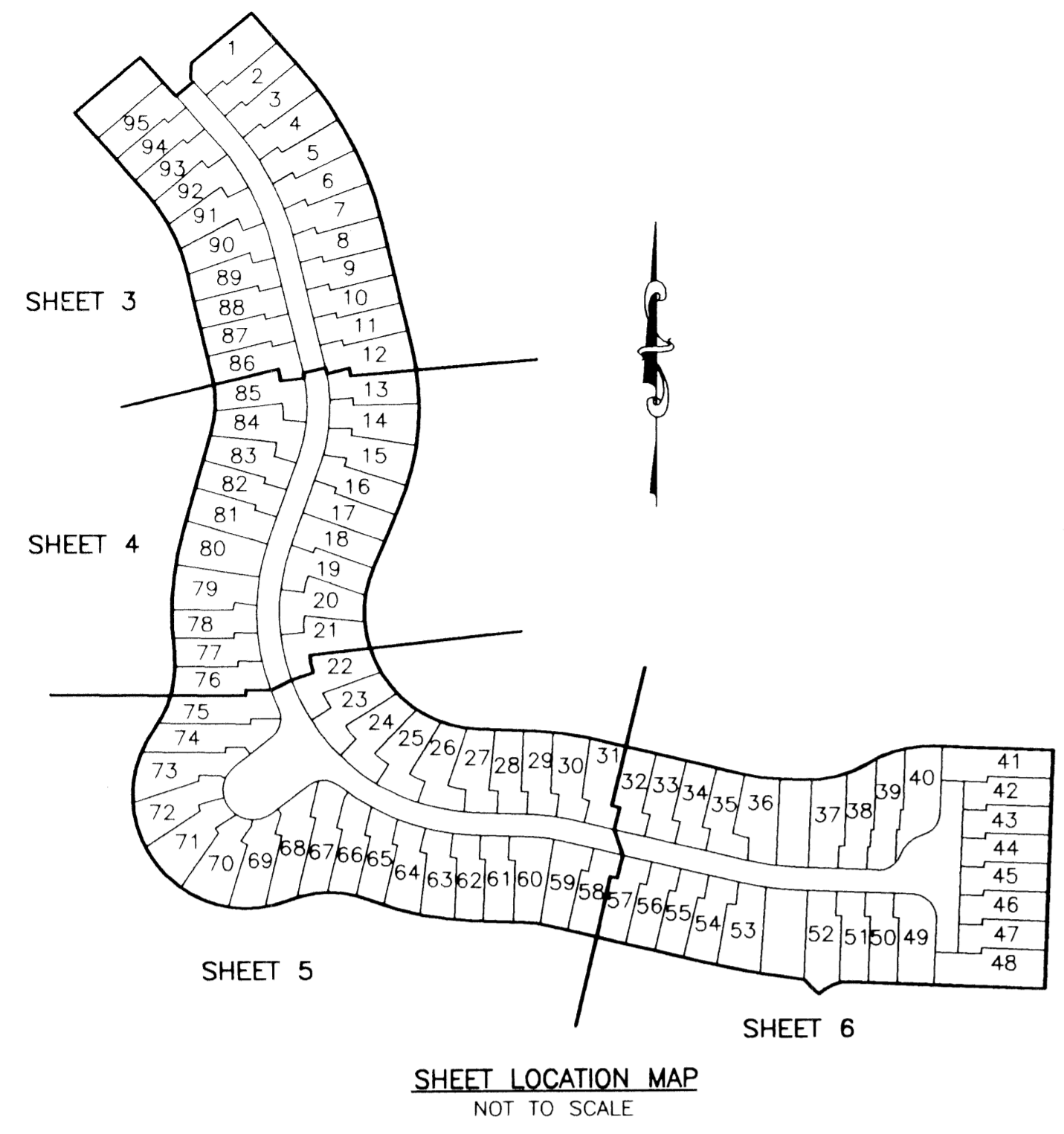


STATE OF FLORIDA  
COUNTY OF PALM BEACH

THIS PLAT WAS FILED FOR RECORD \_\_\_\_\_ DAY OF \_\_\_\_\_ AD, 2003 AND DULY RECORDED IN PLAT BOOK \_\_\_\_\_ ON PAGES \_\_\_\_\_ AND \_\_\_\_\_

DOROTHY H. WILKEN, CLERK BY: \_\_\_\_\_, D.C.

CIRCUIT COURT SEAL



S:\bay\lay\pa14\dwg\pa14rp02.dwg 6/16/2003 10:33:52 AM EDT

REV.: 06-06-03  
CAD FILE:  
TAYLPA14.PA14RP02

THIS INSTRUMENT WAS PREPARED BY MARY HANNA CLODFELTER, P.S.M. IN THE OFFICES OF MOCK, ROOS & ASSOCIATES, INC., 5720 CORPORATE WAY, WEST PALM BEACH, FLORIDA 33407.

SCALE:  
1"=40'  
P.A. NO.:  
99375.00  
DATE:  
FEBRUARY 2003  
DRAWING NO.  
42-42-03-102

FLORIDA L.B. NO. 48  
**MOCK • ROOS**  
ENGINEERS • SURVEYORS • PLANNERS  
5720 Corporate Way, West Palm Beach, Florida 33407  
(561) 683-3113, fax 478-7248

SHEET 4 OF 6  
**MIRASOL PARCEL FOURTEEN**  
PART OF GOLF DIGEST P.C.D.  
BEING IN SECTIONS 03 AND 04,  
TOWNSHIP 42 SOUTH, RANGE 42 EAST,  
CITY OF PALM BEACH GARDENS,  
PALM BEACH COUNTY, FLORIDA